

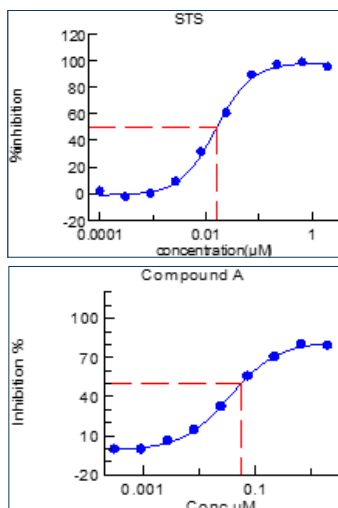
CANCER CELL LINE PANEL SCREENING

LEADING CELL-BASED ASSAY SERVICE

With over **700 cancer cell lines in house**, ChemPartner covers all the major cancer types and includes cell lines from commercial sources such as ATCC, ECACC, DSMZ, RIKEN, JCRB, as well as our proprietary PDX-derived primary cancer cell lines.

All the cell lines have been tested to be mycoplasma free, and >75% of the cell lines have been through thorough characterization including **determination of cell doubling time, seeding densities, and reference compound testing**. Cancer cell line anti-proliferation panel screening is routinely carried out by a dedicated team in our 700 m² cell culture facility well equipped with state-of-the-art instrumentation.

EXAMPLE DATA



TESTING CONDITIONS

- Plate formats:
 - » 96-well plate
 - » 384-well plate
- Assay formats:
 - » Cell Titer Glo
 - » Cell Titer Blue
 - » Cyquant
- Number of doses per compound:
 - » 9-10 dose IC50 format
 - » Single dose
 - » Double doses
- Number of replicates:
 - » Triplicates
 - » Duplicates
 - » Singleton
- Time of compound treatment:
 - » 72 hours
 - » 2 cell doubling time

DELIVERABLES

- Documented methods and testing conditions
- Quality Control Statement (Z', SW, CV%, reference compound data)
- Experimental Results (% inhibition, curve fitting and compound IC50s by XLfit or GraphPad Prism if applicable)

SAMPLE SUBMISSION

- Testing compounds can be submitted as dry powder or in DMSO stock. 2-5 mg per compound is adequate for most of the panel screenings.

RELATED SERVICE

- Cell proliferation assays by other formats: MTS, MTT, Soft agar colony formation, long-term proliferation
- Cell apoptosis assay, cell cycle analysis, protein phosphorylation
- Xenograft models

Cell Line Tissue Origin	Number of Cell Lines	Source	Assay Format	Timeline (for <40 cell lines)
Lung Cancer	149	ATCC, ECACC, CLS, RIKEN, JCRB, KCLB, SIBS	96-well plate 384-well plate	2-4 weeks
Leukemia	49	ATCC, ECACC, DSMZ, RIKEN, JCRB, KCLB, SIBS	96-well plate 384-well plate	2-4 weeks
Brain Cancer	50	ATCC, ECACC, CLS, RIKEN, JCRB, KCLB, SIBS	96-well plate 384-well plate	2-4 weeks
Breast Cancer	44	ATCC, CLS, SIBS	96-well plate 384-well plate	2-4 weeks
Lymphoma	46	ATCC, DSMZ, JCRB	96-well plate 384-well plate	2-4 weeks
Liver Cancer	32	ATCC, JCRB, KCLB, SIBS, ChemPartner	96-well plate 384-well plate	2-4 weeks
Colon Cancer	37	ATCC, ECACC, SIBS	96-well plate 384-well plate	2-4 weeks
Melanoma	32	ATCC, ECACC, CLS, RIKEN, JCRB	96-well plate 384-well plate	2-4 weeks
Pancreatic Cancer	31	ATCC, ECACC, RIKEN, JCRB, ChemPartner	96-well plate 384-well plate	2-4 weeks
Ovarian Cancer	30	ATCC, ECACC, JCRB, KCLB, SIBS	96-well plate 384-well plate	2-4 weeks
Esophagus Cancer	18	ECACC, DSMZ, CLS, RIKEN, JCRB, SIBS	96-well plate 384-well plate	2-4 weeks
Kidney Cancer	21	ATCC, RIKEN, JCRB, SIBS	96-well plate 384-well plate	2-4 weeks
Gastric Cancer	22	ATCC, JCRB, RIKEN, SIBS	96-well plate 384-well plate	2-4 weeks
Bone Cancer	17	ATCC, ECACC, CLS, JCRB	96-well plate 384-well plate	2-4 weeks
Bladder Cancer	12	ATCC, ECACC, CLS	96-well plate 384-well plate	2-4 weeks
Tongue Cancer	12	ATCC, ECACC, JCRB, KCLB,	96-well plate 384-well plate	2-4 weeks
Myeloma	11	ATCC, DSMZ	96-well plate 384-well plate	2-4 weeks
Prostate Cancer	7	ATCC, SIBS	96-well plate 384-well plate	2-4 weeks
Cervical Cancer	7	ATCC, RIKEN, SIBS	96-well plate 384-well plate	2-4 weeks
Others	92	ATCC, ECACC, DSMZ, CLS, RIKEN, JCRB, KCLB, SIBS	96-well plate 384-well plate	2-4 weeks